





Contents

History	03
Mission and vision	05
Our qualification and services	07
Quality management systems	09
Corporate manpower resources	11
Corporate machinery & equipment	13
Infrastructure projects	15

Airport works	23
Civil and other works	24
Other projects	25
Maintenance works during winter time	27
Maintenance works during summer time	28
Production bases	27
Clients' recognition	31
Social responsibility	33

History

Pa&Co International SRL is a completely Romanian private capital company. It was founded in 1990 by Paulina and Costel Casuneanu who used for the development foundation the QUALITY, the INNOVATION and the RESPONSIBILITY. These values were also assumed by Costel and Ionut Casuneanu their two sons who are now actively involved in Pa&Co International management.

1990

Pa&Co International is founded. The company obtains the license for international road transport. The main destinations are: Germany, Austria, Holland, France, Sweden, Norway, Greece.

1991

Pa&Co International becomes a member of an international network compound of expedition houses, importers, exporters and producers in European Union.

1992

Pa&Co International is starting up the investment in new trucks of German and Swedish origin

1993

The transportation fleet is the first in European Union using the EUTELTRACS system for tracing the trucks by satellite. Trucks can be easily identified in traffic and the connection with the driver is permanent.

1995

Pa&Co International invests over 30 millions dollars in construction of the first Romanian private triple-layered parquet factory.

1997

The parquet factory begins to produce. Over a million of square meters of triple-layered parquet are yearly exported in a chain of over 900 stores in European Union.

1998

The company was owning over 250 trucks, being the main international transport company in Romania

1999

The company invests over 40 millions of dollars in developing the division of civil and industrial constructions. It begins the construction of panel factory and wooden doors and windows factory in Radeana, county of Bacau.

2000

The Division of construction, repairs and maintenance of roads and bridges is designed as incorporate system so that Pa&Co International is able to guarantee for the quality of its works. Significant investments are made for endowment with stations for concrete production, asphalt mixing production and asphalt emulsions, equipments for layout and finishing, high performance labs.

2001

The triple-layered parquet factory starts to use, a premiere in the South-East of Europe, the patent of "click" system to catch the parquet plates without adhesive.

2006

Pa&Co International is awarded, as a premiere, an international bid for the construction of Bucuresti – Brasov motorway, the section Moara Vlasiei – Ploiesti.

2009

The company invests over 30 millions euro in equipments and technologies of latest generation for construction and repair of roads and bridges. By the same time starts the partnership Pa&Co International – OMV. The company is the only one in Romania approved to lay out the bitumen modified with polymers produced by OMV.

2010

Are successfully finalized the construction works of Ploiesti West ring road with a length of 14.8 km and motorway profile. Start up the works at underground passageway "Stefan Gusa" in Bacau city, a complex work consisting of under passage of 14 railways on a length of 300 meters.

2011

Pa&Co International is building the underground passageway "Pipera" in Bucharest with a length of 900 meters on columns drilled at 12 meters. Also are finalized the works at DJ208 border of county Iasi – the border of county Suceava investment financed with European Union

The expansion of the company in the 20 years of activity was made through permanent investment of the profit and through respecting the European principles of durable development by means of rational exploit of resources. Pa&Co International was permanently preoccupied by the protection of environment. The means of transportation were and are fitted with euro 3 and euro 4 systems, wood processing equipments as well as stations for asphalt mixtures and concrete production are environmental friendly

Pa&Co

Mission

Vision

Quality. Responsibility. Innovation. These are the values we built our development and our mission on and the QUALITY of services, products and people who crossed their way with our company became the main value of our group culture.

The increasing of individual's life quality represented the mission of our company and retrieved in the products and services offered. The man and his life quality are essential for the way we do business. The individual and his comfort were the focus of our attention when we elaborated the company's strategies and the investment policies.

A life without risks is what we are thinking of when we repair, asphalt or build roads. As transporters we knew that the safety of our services may offer to the customers the comfort to develop their businesses. The wide range of wooden products, massif parquet, panels, doors and windows did also consider, beside the economical reasons, our concernment to make the life of people as more agreeable as possible. Our concern for people and the quality of their life is also retrievable in the technologies and machineries we use with the help of which we are trying not to disturb the nature's equilibrium.

In our vision, the development of Pa&Co International means services and products complying with most severe conditions of European rules and norms or any other civilized state in any corner of the world.

Pa&Co International brand means a permanent care for quality, the main resort of company's policy but also an incorporated view over the role of different divisions so that the stability of company not to be influenced by the internal or external evolution on the markets.

Our calification and services

1. Raw materials and production

- a. Raw material:
extraction: ballast, sand, stone;
processing: crushing, sorting, washing.
- b. Production
concrete; cold emulsion;
asphaltic mixture; special mixture;
precast concrete units.



2. Construction

- a. Infrastructure construction
roads and highways; airport surfaces;
road structure (bridges, culverts,
ditches, passage ways, viaducts, shore
protections).
- b. Civil and industrial buildings:
offices buildings, company head
offices, houses;



3. Maintenance works

Pa&Co International developed a maintenance works program for summer time as well as for winter time. With its machineries, Pa&Co International is able to provide the best services for this kind of activities



4. International Transport of goods

- a. International Transport
Alimentary and non alimentary products, transport of
flammable substances, special transports other
transport services



5. Wood Processing

- a. Parquet factory, panel factory, doors and
windows factory;
- b. Industrial plank, building ground, fittings
and utilities.



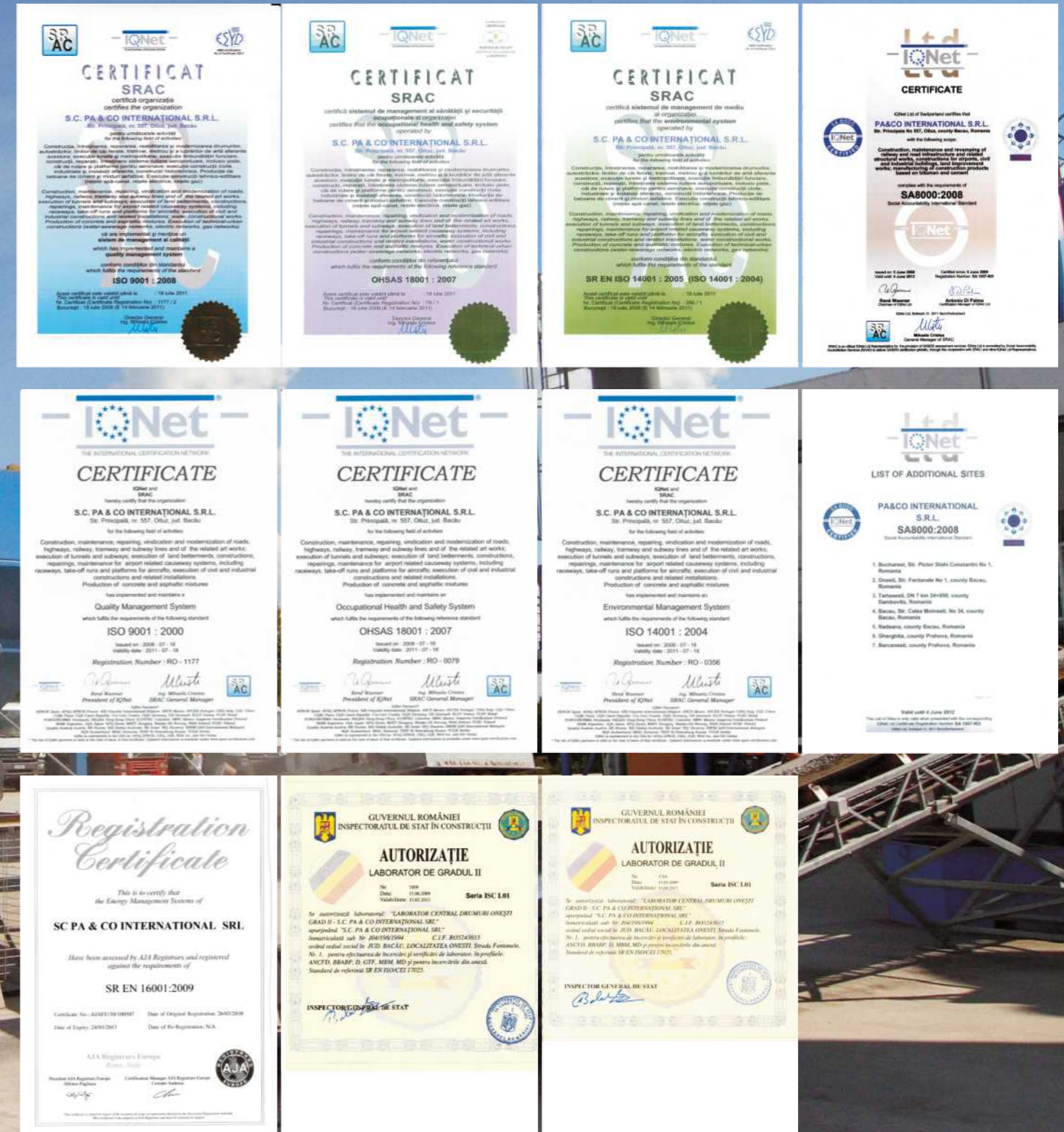
Quality management systems

The quality of products and services were the basis of the consolidation on the market of Pa&Co International brand. Ensuring and improving the quality represents one of the main values of our organization, around which the development was thought.

Pa&Co International has implemented an Integrated System of Quality Management – Environment – Health and Work Safety – Energy. All processes are so designed as to ensure the quality parameters of products or services, in terms of environmental protection and with efficient management of resources. Pa&Co International's quality has been recognized by ISO 9001, 14001, 16001 and 18001.

Most importance is granted, however, to the employees, to their safety and to increase their life standards. Pa&Co has implemented social responsibility system, which has obtained certification according to international standards.

The quality of our infrastructure works is provided through an integrated follow-up system, which starts from checking the quality of materials and raw materials, up to how to achieve various asphalt or concrete mixing. This way, we can be responsible for the quality of our works. Pa&Co International disposes of an advanced laboratory, certified by the State Inspectorate in Construction, with working points on all sites where we carry out works.



Corporate manpower resources

Total corporate resources

Type	No. of	Type	No. of
1. Management (HR, Financial Admin.)	28	10. Welders	25
2. Engineers	62	11. Skilled labors	210
3. Mechanical technicians	30	12. Unskilled labors	52
4. Mechanical foremen	18	13. Drivers	247
5. Technical foremen	15	14. Operators	120
6. Electricians	20	15. Guards	30
7. Laboratory technicians	18	16. Blacksmith concreters	25
8. Surveyors	15	17. Carpenters	20
9. Plumbers	30	18. Safety officer	15
		19. Support / Others	45

Human resource was and still is considered the most important capital of the company, and seriousness and tradition were the basis of the personnel policy of Pa&Co International. Care for our people was always the first priority.

Over 1,200 employees worked, throughout time, in wood processing factories, in construction or in international transport. Creating optimum working conditions, continuous training and careful selection allow us to talk today about a stable and loyal staff to the company.

For us it is a pride and responsibility to have employees who have identified their existence with the one of Pa&Co International, since its establishment in the early 90s and that there are families that passed from one generation to another the tradition of working in our organization

Training sessions and qualification courses have enabled an effective management of human resources within the company, including relocation of staff from one division to another as needed.

Pa&Co International has specialists with high expertise and experience, ready to find the best solutions to solve any project, at quality standards for any client from the European Union.

Corporate machinery & equipment resources

Corporate machinery in numbers

Type	No. of
Asphalt mixing plant	5
Concrete mixing plant	2
Sorting station	2
Raw material breaker	2
Drilling machine	1
Trencher	1
Tower crane	4
Mobile crane	2
Grader	5
Excavator	12
Bulldozer	10
Loader	18
Roller compactor	21

Type	No. of
Asphalt roller compactor	26
Asphalt finisher	10
Asphalt cutter	3
Trucks	187
Unimog	18
Concrete pump	1
Cement truck	4
Bitumen tank	13
Fuel tank	2
Water tank	6
Tarring machine	5
Breining	2
Busses	11

Over 120 million dollars were invested by Pa&Co International in the 20 years of existence, in the most modern equipment and technology available on the world market. Permanent reinvestment of profits has been one of the pillars of the development of the company and it allowed a professional approach of any field of activity that we considered.

Equipment, tools and technologies owned by Pa&Co International and the high professionalism of our specialists serve to cover a wide range of works in civil and industrial engineering, infrastructure and superstructure.

The fleet of Pa&Co International has over 480 specialized trucks and cars and it is constantly renewed.

Our fleet is equipped, at a rate of 80%, with Euro 3 and Euro 4 systems, to reduce emissions. Service and maintenance of cars is done by specialized companies in Germany - Mercedes Benz, MAN and Volvo - and the services owned by Pa&Co International.

Infrastructure projects

Pa&Co International covers the whole range of services for civil and industrial constructions, infrastructure and superstructure execution. Pa&Co International investments in the extension division boasts over 35 million euro, amount found in machinery and technologies and continuous training of our specialists.

Development of the building, repair and maintenance of roads and bridges sector was designed in an integrated system, so that we can vouch for the quality of our work. The company was concerned with the provision of concrete production plants, plants for production of asphalt mixtures and asphalt emulsions, and also with advanced laboratories where the required quality parameters are followed throughout the execution.

For each work, depending on the customer's requirements, the specialists elaborate recipes of asphalt and concrete mixtures, analyzed afterwards in laboratories.

Building Division of Pa&Co International represents the most important field of activity of the company and the acquisition of advanced technologies and equipment had led to increased competitiveness. Diversification and increased complexity of the works occurred simultaneously with increased consumer needs in terms of quality and safety in construction.

Our company has the most modern equipment and technology necessary for the construction of roads, highways and airport runways.

Asphalt works

Pa&Co International has an experience of over ten years in infrastructure construction, county, national road, motorways and airport surfaces. In our portfolio are over 1,000 kilometers of asphalt runways. The quality of works is proven by the fact that our works had never requested interventions in the warranty period and also above. We own the best unpollutant technologies and the latest equipment, and Pa&Co specialists can provide technical solutions and works of high complexity.



Asphalt mixtures

Pa&Co International spreads asphalt mixtures on different surfaces in infrastructure projects it develops. The mixtures are manufactured in the company's performance stations, fitted with dosing additives, asphalt fluxes and fibers used. The automated control of manufacturing flow from these stations provides careful compliance with the dosages specified in the mix designs. The mix designs are developed by the Central Laboratory from Pa&Co International, grade II approved laboratory for all types of asphalt mixtures used in bituminous pavements execution:

- Asphalt mixtures prepared with simple bitumen for the execution of the base layer, binding or wear layer for roads, motorways and other ways of road communication;
- Asphalt mixtures prepared with additives bitumen for the execution of the base layer, binding or wear layer on roads, motorways and other ways of road communication;
- Asphalt mixtures prepared with modified bitumen for the execution of binding or wear layer for roads, motorways, rally tracks, airport runways and other ways of road communication;
- Asphalt mixtures prepared with fiber and simple modified bitumen for the execution of wear layer for roads, motorways, rally tracks, airport runways and other ways of road communication;
- Asphalt mixtures for bridge lane, prepared with simple, additives, modified or fiber added bitumen;
- Asphalt mixtures prepared with colored bitumen for the execution of the colored bituminous coats;
- Storable asphalt mixtures prepared with bitumen and asphalt flux, for the execution of bituminous coats repair during winter time.

Stabilized ballast

Pa&Co International lays stabilized ballast:

1. In situ;
2. With plant production and asphalt paver.

Our company owns technical resources to lay stabilized ballast in situ for motorways and national roads with a capacity of 500 cubic meters per hour.

Modernization of Ploiesti West Ring Road involved an expansion from two to four lanes of the runway on a length of 12.5 kilometers. It was effectuated by laying stabilized ballast in situ.

Pa&Co International lays also stabilized ballast produced in plant. For the works to Moara Vlasiei – Ploiesti motorway section, from the A3 Bucuresti – Brasov motorway, the engineer has chosen stabilized ballast in plant and layed with the laying kit. For this complex work our company purchased a plant with a capacity of 2,400 cubic meters stabilized ballast per hour.

Infrastructure projects

Bucharest – Brasov A3 Motorway, section Moara Vlasiei – Ploiesti (km 19+500 – km 62+000)
Pa&Co International performance segment: km 31+775 – km 46+500



One of the great challenges for Pa&Co International specialists is the construction of the Bucharest – Brasov highway, section Moara Vlasiei – Ploiesti (km 31+778 - km 46+500). The work has a length of 14.7 kilometers and will provide a useful width of over 22 meters. Provision of protection and drainage ditches will lead finally to a section of highway over 50 feet between the two fences.

Project Name	Value of Contract at Completion USD	Contract Starting Date	Role in contract	Employer
Bucharest – Brasov A3 Motorway, section Moara Vlasiei – Ploiesti (km 19+500 – km 62+000) Pa&Co International performance segment: km 31+775 – km 46+500	138.000.000	November 2006	Partner in JV	RNCMNR

Ploiesti West ring road



Ploiesti West ring road with a length of 12,8 kilometers involved extending from two to four lanes and execution of five passages, one of which with more than 15 railway lines. Rolling layer is made of polymer modified bitumen, an alternative technology that doubles the life of the road, Ploiesti West ring road has a profile of a highway and it is one of the most transited access roads from the capital.

Project Name	Value of Contract at Completion USD	Contract Starting Date	Role in contract	Employer
Ploiesti West Ring Road	39.573.168	November 2007	Sole Contractor	RNCMNR

Bridges & passageways

A3 motorway passageways

The construction of A3 Bucuresti-Brasov motorway, Moara Vlasiei-Ploiesti section, between km 19 +500 - km 62+000, involved the construction of seven passages over the motorway, with concrete infrastructure and openings between 14 and 21 meters.

- The passages lies down up to 70 meters in length.
- The Passage from km 34+385 -Runway with a width of 7 metres
- Passage from km 37+001 - Runway with a width of 7.8 meters
- Passage from km 43+053 - Runway with a width of 7 meters
- Passage from km 45 +100 - Runway with a width of 7 meters
- Passage from km 46+900 - Runway with a width of 7 meters
- Passage from km 48+100 - Runway with a width of 7 meters

Every passage has two sidewalks of 1.5 meters each

Two bridges have been built on the motorway:

1. Bridge from km 31+864 (over Ialomita river) with a length of 171 meters:
 - 1080 millimeters diameter columns;
 - Reinforced concrete foundation;
 - Elevations of reinforced concrete;
 - Superstructure with metal deck and concrete slabs;
 - The bridge has three spans.
2. Bridge from km 31+864 (over Prahova river) with a total length of 145 meters:
 - Columns of 1080 millimeters;
 - Reinforced concrete foundation;
 - Elevations of reinforced concrete;
 - Superstructure with metal deck and concrete slabs;
 - The bridge has three spans.

Photo: Bucharest – Brasov Motorway

Pipera passageway

A representative work in Pa&Co International portfolio is the Pipera Passageway in Bucharest city, a work of high complexity.

- Total length of the work: 1,658 meters
- Length of above-ground passageway: 474 meters
- Number of openings: 18
- Maximum opening width: 30 meters
- Foundations on Benotto columns: 4,998 meters
- Number of beams/opening: 12
- Length of ramps: 216 meters
- Asphalt surface: 45,000 square meters
- Walkway surface : 20,000 square meters.

Photo: Bucharest – Pipera Passageway

Infrastructure projects

Project Name	Value of Contract at Completion USD	Contract Starting Date	Role in contract	Employer
National Road 15D, km 114+000 - 118+000	109.721	2000-04	Sole Contactor	Regional Management for Roads and Bridges IASI
National Road 15D, km 121+000 - 127+500	175.350	2000-05	Sole Contactor	Regional Management for Roads and Bridges IASI
National Road 24D, km 151+850 - 171+000	801.340	2000-05	Sole Contactor	Regional Management for Roads and Bridges IASI
National Road 2E, km 0+000 - 30+400	1.792.088	2001-03	Sole Contactor	Regional Management for Roads and Bridges IASI
National Road 12A, km 47+731 - 68+000	1.023.761	2001-03	Sole Contactor	Regional Management for Roads and Bridges IASI
NR 12A, km 93+845-100+870, km 104+705-114+600	930.05	2001-05	Sole Contactor	Regional Management for Roads and Bridges IASI
National Road 11 km 125+550 - 126+700	103.491	2001-1	Sole Contactor	City Hall of ONESTI municipality
National Road 11 km 127+200 - 128+300	279.320	2002-05	Sole Contactor	City Hall of ONESTI municipality
Bridge consolidation on National Road 12A km 112+215	342.678	2002-05	Sole Contactor	Regional Management for Roads and Bridges IASI
National Road 11 km 128+760 - 129+600	178.058	2002-06	Sole Contactor	City Hall of ONESTI municipality
National Road 11 km 99+500 - 99+550	174.585	2002-06	Sole Contactor	Regional Management for Roads and Bridges IASI
National Road 11 km 100+900 - 101+200	201.814	2002-06	Sole Contactor	Regional Management for Roads and Bridges IASI
National Road 11 km 107+400 - 107+500	252.767	2002-06	Sole Contactor	Regional Management for Roads and Bridges IASI
National Road 11 km 111+ 500 - 111+ 600	289.879	2002-06	Sole Contactor	Regional Management for Roads and Bridges IASI
National Road 11 km 92+400 - 92+700	293.137	2002-06	Sole Contactor	Regional Management for Roads and Bridges IASI
County Road 115 Onesti - M-rea Casin - Scutaru	1.006.823	2002-06	Sole Contactor	County Public Management for Roads BACAU
National Road 15, km 325+650 - 345+100	240.610	2002-06	Sole Contactor	Regional Management for Roads and Bridges IASI
NR 12A km 0+200- 116+600, Miercurea Ciuc- Onesti	4.669.687	2002-07	Sole Contactor	RNCMNR S.A.
National Road 11 km 0+000 - 179+094 Brasov - Bacau	13.728.642	2002-07	Sole Contactor	RNCMNR S.A.
Forest road CFF Bucias transforming	72.495	2002-08	Sole Contactor	The Forestry Department of BACAU county
Forest road Halosul Mic	116.520	2002-08	Sole Contactor	The Forestry Department of BACAU county
Forest road Mătu Lauru	373.396	2002-09	Sole Contactor	The Forestry Department of BACAU county
Forest road Pârâul Preutesei	379.533	2002-10	Sole Contactor	The Forestry Department of BACAU county
Forest road CFF Coarnele Dobrele transforming	417.556	2002-10	Sole Contactor	The Forestry Department of BACAU county
Streets maintenance works in Onesti Municipality	1.130.366	2003-05	Sole Contactor	The City Hall of Onesti

Project Name	Value of Contract at Completion USD	Contract Starting Date	Role in contract	Employer
National Road 11 km 90+400 - 90+450	146.599	2003-07	Sole Contactor	Regional Management for Roads and Bridges IASI
Communal Road 127, Casin - Curita	1.020.608	2003-07	Sole Contactor	The Council of Casin Commune
County Road 294, km 0+000 - 5+550, DN 28B - Gulioaia	119.514	2003-08	Sole Contactor	County Public Management for Roads BOTOSANI
County Road 208H, km 12+600 - 19+210	135.714	2003-08	Sole Contactor	County Public Management for Roads BOTOSANI
National Road 2G, km 3+891 - 55+400	11.800.779	2003-08	Sole Contactor	Regional Management for Roads and Bridges IASI
National Road 15B Poiana Largului - Tg. Neamt	18.835.325	2003-10	Sole Contactor	RNCMNR S.A.
National Road 15 Toplita - Poiana Largului	29.059.351	2003-10	Sole Contactor	RNCMNR S.A.
Communal Road 149, km 3+700 - 9+500	1.139.739	2003-11	Sole Contactor	The Council of Dofteana Commune
National Road 15 Piatra Neamt – Bacau	26.703.297	2003-11	Sole Contactor	RNCMNR S.A.
National Road 12B Tg. Ocna - Slanic Moldova	3.418.751	2004-04	Sole Contactor	RNCMNR S.A.
Locotenent Sion, Alexandru cel Bun, Maior Rosita, Victoriei streets	228.656	2004-07	Sole Contactor	City Hall of Tg. Ocna
Crizantemelor, Tudor Vladimirescu, Strapungere Victoriei, Capitan Busila si Piateta Autogara streets	228.656	2004-07	Sole Contactor	City Hall of Tg. Ocna
General Dascalescu street km 315+850 - 318+281	690.625	2004-08	Sole Contactor	Publiserv Piatra Neamt Ltd
Road and bridges reconstruction on National Road 15, km 353+840	111.062	2004-08	Sole Contactor	Regional Management for Roads and Bridges IASI
National Road 17 km 219+600 - 220+300	76.025	2005-06	Sole Contactor	Regional Management for Roads and Bridges IASI
County Road 293 A km0+000-1+010 and km11+550 - km18+170	580.027	2005-06	Sole Contactor	City Hall of Nicolae Balcescu commune
December 1st, 1918 street	165.197	2005-08	Sole Contactor	Publiserv Piatra Neamt Ltd
Cetatea Neamtului Street	183.272	2005-08	Sole Contactor	Publiserv Piatra Neamt Ltd
Fermelor street of 10.000 sqm surface	442.669	2005-08	Sole Contactor	Publiserv Piatra Neamt Ltd
Streets and alleys in Maratei neighbourhood on a 28,314 sqm surface	580.154	2005-08	Sole Contactor	Publiserv Piatra Neamt Ltd
National Road 12 A, km 56+965-57+035, 63+870-64+090	1.177.338	2005-08	Sole Contactor	Regional Management for Roads and Bridges IASI
National Road 12 C, km 32+300-36+000, 54+010-54+090, 54+760-54+890	655.620	2005-08	Sole Contactor	Regional Management for Roads and Bridges IASI
National Road 15, km 230+620-230+700, 227+943, 235+900-236+000, 237+200, 237+500, 282+645, 282+800, 287+062	655.620	2005-08	Sole Contactor	Regional Management for Roads and Bridges IASI
National Road 11, km 90+080-90+090, 90+650-90+700, 95+500-95+550, 106+800-106+900, 111+400-111+500, 112+150-112+450, 140+650-140	1.989.009	2005-08	Sole Contactor	Regional Management for Roads and Bridges IASI

more than **1.000** kilometers built

Infrastructure projects

Project Name	Value of Contract at Completion USD	Contract Starting Date	Role in contract	Employer
National Road 12 A, km 47+050-47+150, 71+711-71+815, 100+100-100+150, bridge at km 101+335	388.801	2005-08	Sole Contactor	Regional Management for Roads and Bridges IASI
National Road 12 B, km 2+150-2+920, 3+000-3+090, 3+350-3+540, 3+900-3+920, 4+530-4+600, 4+600-4+850, 6+800-6+850, 7+100-7+180, 9	805.860	2005-08	Sole Contactor	Regional Management for Roads and Bridges IASI
Forest Road Lesunt and Cernica bridge reconstruction after the floods	392.857	2005-09	Sole Contactor	The Council of Oituz Commune
Communal Road 169, Nicolae Balcescu - Valea Seaca, km 2+500 - 3+100	145.600	2005-10	Sole Contactor	City Hall of Nicolae Balcescu commune
Communal Road 169, Nicolae Balcescu - Valea Seaca km 0+000 - 2+500	481.373	2005-10	Sole Contactor	City Hall of Nicolae Balcescu commune
Access road to Rotunda site	778.977	2005-11	Sole Contactor	The Council of Gura Vaii
Valcele and Glean streets modernization in Tg.Ocna	1.358.525	2006-05	Sole Contactor	City Hall of Tg. Ocna
Streets in Bacau Municipality	3.357.900	2006-05	Sole Contactor	City Hall of BACAU municipality
A1 Highway Bucuresti - Pitesti	24.235.428	2006-07	Sole Contactor	RNCMNR S.A.
Stefan cel Mare street modernization	213.350	2006-08	Sole Contactor	The Council of Slanic Moldova
Road sistem repairs on National Road 22C	10.195.327	2006-08	Sole Contactor	RMRB CONSTANTA
Bucharest – Brasov A3 Motorway, section Moara Vlasiei – Ploiesti (km 19+500 – km 62+000) Pa&Co International performance segment: km 31+775 – km 46+500	138.000.000	2006-11	Sole Contactor	RNCMNR S.A.
Modernization of streets with tramway on Oltenitei roadway	22.531.128	2007-03	Sole Contactor	City Hall of BUCHAREST municipality
County Road 115, Onesti – Casin – M. Casin	3.551.531	2007-04	Sole Contactor	County Public Management for Roads BACAU
Design and build of current repairs at airport runway nr. 2	2.564.988	2007-05	Joint Venture	International Airport Henri Coanda Bucuresti SA
Asphalted streets in Moinesti municipality	3.228.699	2007-08	Sole Contactor	City Hall of MOINESTI municipality
Reinforcement works on heavy traffic roads section I and II from Medgidia municipality	6.006.775	2007-08	Sole Contactor	City Hall of MEDGIDIA municipality
Slurry seal works in Bacau municipality	735.915	2007-09	Sole Contactor	City Hall of BACAU municipality
Slurry seal works for Zalau Road Administration	2.713.313	2007-09	Sole Contactor	Regional Management for Roads and Bridges CLUJ
National Road 11, km 91+000 - 102+000	1.466.252	2007-10	Sole Contactor	Regional Management for Roads and Bridges IASI
County Road 119E, Stefan Cel Mare – Bogdana, km 0+000 – 4+200	1.673.964	2007-11	Sole Contactor	County Public Management for Roads BACAU
Ploiesti West ring road km 0+000 – km 12+850	39.573.168	2007-11	Sole Contactor	RMRB BUCURESTI
DJ 118, km 0+000 - 10+800	3.841.592	2008-03	Sole Contactor	County Public Management for Roads BACAU
Modernization of communal road DC 153, km 2+285 - 9+265	2.645.585	2008-03	Sole Contactor	The Council of Barsanesti commune
Streets repair and maintenance in Onesti municipality	2.600.452	2008-05	Sole Contactor	City Hall of ONESTI municipality

Project Name	Value of Contract at Completion USD	Contract Starting Date	Role in contract	Employer
National Road 12A, km 74+400 – 114+600	16.793.730	2008-05	Sole Contactor	Regional Management for Roads and Bridges IASI
County Road 116, Birsanesti (NR11) – Tg. Ocna	4.203.156	2008-05	Sole Contactor	County Public Management for Roads BACAU
Mircea Eliade and Schitu Magureanu streets in Bucharest	3.978.705	2008-10	Sole Contactor	BUCHAREST Road Administration
National Road 1 km 586+400 – 600+000	936.990	2008-10	Sole Contactor	Regional Management for Roads and Bridges CLUJ
County Road 116 B Comanesti – Straja, km 0+340 – 5+878	1.629.807	2008-11	Sole Contactor	County Public Management for Roads BACAU
Modernization of communal road DC 124, km 2+200 - 8+200	1.893.348	2008-11	Sole Contactor	The Council of Buciumi commune
Summer maintenance works of county roads	225.090	2009-03	Sole Contactor	County Council of Harghita county
National Road 1F km 71+000 - 81+100	1.124.086	2009-05	Sole Contactor	Regional Management for Roads and Bridges CLUJ
National Road 15 C km 52+300 - 58+328	151.651	2009-08	Sole Contactor	Regional Management for Roads and Bridges IASI
National Road 29A km 3+000 - 23+010, NR 2E km 30+605 - 64+481, NR 2H km 17+350 - 43+600	1.324.886	2009-08	Sole Contactor	Regional Management for Roads and Bridges IASI
National Road 1 km 447+120 - 455+445	884.981	2009-09	Sole Contactor	Regional Management for Roads and Bridges CLUJ
National Road 15 km 0+000 - 5+000	410.386	2009-09	Sole Contactor	Regional Management for Roads and Bridges CLUJ
Road subway on Stefan Guse street, Bacau municipality	7.292.643	2009-09	Sole Contactor	City Hall of BACAU municipality
County Road 127 A km 53+071 - 51+171	221.278	2009-10	Sole Contactor	County Council of Harghita county
Modernization of communal road DC 121 , NR 11A - Gutinas, km 0+000 - 5+200, Stefan Cel Mare commune	1.435.035	2009-11	Sole Contactor	City Hall of Stefan Cel Mare commune
Modernization county road DJ 127 A, km 25+925 - 29+000	846.977	2009-11	Sole Contactor	County Council of Neamt county
Rehabilitation and modernization of county road DJ 208	12.070.758	2010-03	Sole Contactor	County Council of IASI county
Modernization of Petru Movila str. in Piatra Neamt municipality	3.329.462	2010-05	Sole Contactor	City Hall of Piatra Neamt municipality
Forest road Berzuntiu Negru - Livezi Forestry	418.045	2010-07	Sole Contactor	The Forestry Department of BACAU county
Forest road Argintarie - Targu Ocna Forestry	80.888	2010-07	Sole Contactor	The Forestry Department of BACAU county
Widening of Pipera drive-way Bucharest	31.819.577	2010-09	Sole Contactor	City Hall of BUCHAREST municipality
Modernization works of roads in Ciocanesti Commune	10.871.340	2010-10	Sole Contactor	Local Council of Ciocanesti commune
Design and execution for National Road 1H Zalau-Rastoci	49.630.166	2011-01	Sole Contactor	RNCMNR S.A.
Adjustment the river bed and bank consolidations of Oituz river in Oituz commune, Bacau County	1.048.269	2011-03	Sole Contactor	National Administration "Romanian Waters"
Rehabilitation of R14 Balti - Sarateni road, km 10+780 - km 26+600	10.910.391	2011-05	Sole Contactor	State Road Administration of the Republic of Moldova

more than **100** projects completed

more than **10** years experience in road construction

Airport works

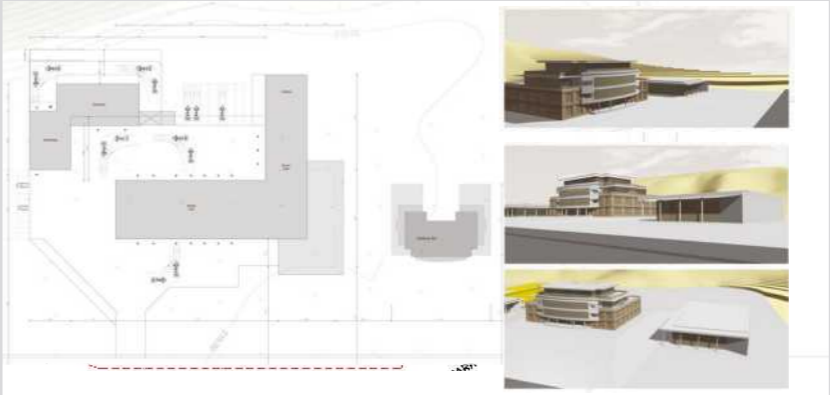


Pa&Co International has upgraded runway no. 2 at International Airport "Henri Coanda" Bucharest. The work involved the complete rebuilding of airport infrastructure and runway. For maximum safety of traffic, experts Pa&Co International layered a ralumac type layer, for which were used products imported from Germany.

Project Name	Value of Contract at Completion USD	Contract Starting Date	Contractor	Client
Henri Coanda International Airport, Bucharest - Otopeni	2.564.988	October 2007	Joint Venture	Henri Coanda International Airport

Photo: Bucharest - Henri Coanda Airport

Civil works

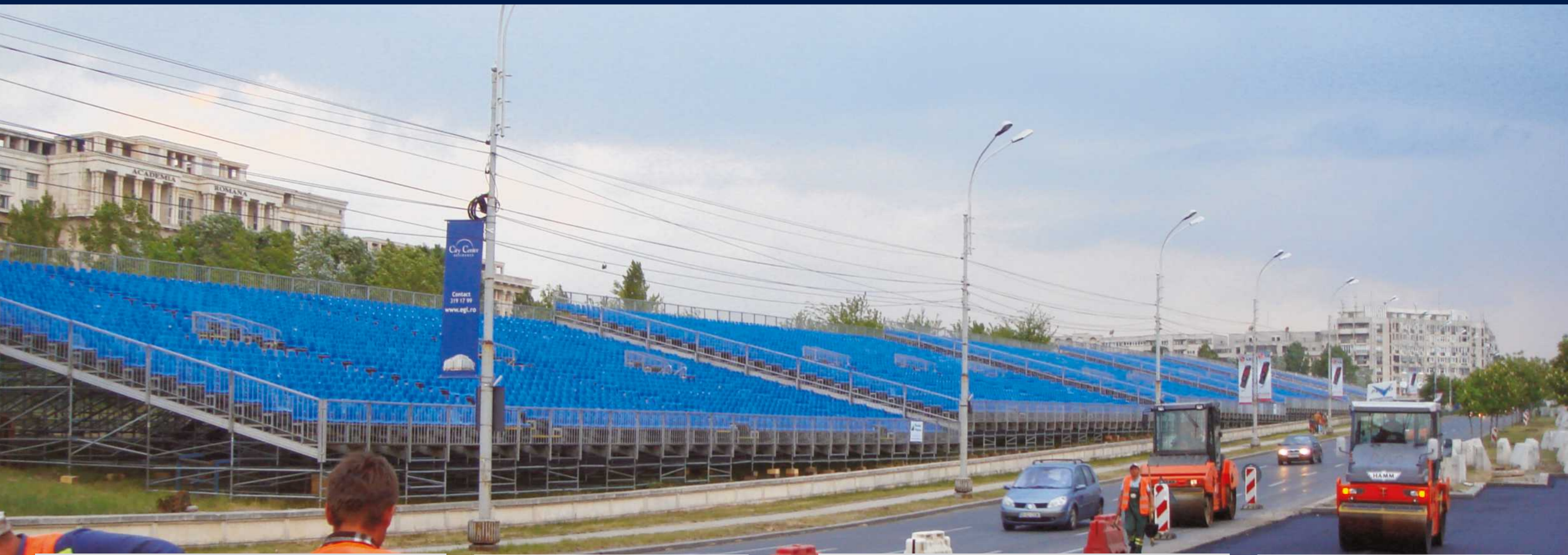


Pa&Co International executes civil and industrial complex works and has significant experience in this field. Our specialists demonstrate their expertise including in the construction of new headquarters of the company, located in Onesti. It consists of an office building S+P+3, with a built area of 4,436 square meters, plus a showroom with a built area of 1,300 square meters and halls of almost 6,000 meters square type S+P +1.

Project Name	Value of Contract at Completion USD	Contract Starting Date	Role in contract	Employer
Production Base Tartasesti	Confidential	May 2007	Sole Contactor	Pa&Co International
Headquarter Onesti	Confidential	Feb 2010	Sole Contactor	Pa&Co International

Photo: Tartasesti base

Other works



Pa&Co International has executed over time special works of high complexity. In 2007, the company made the track arrangement on which took place Formula 3 circuit Bucharest Ring, now a tradition. For the 3.2 kilometers of circuit was used polymer modified bitumen, which ensures a high resistance, and flatness required of such a circuit. The track was homologated by FIA.



“Felix Topescu” Riding Base from Ploiesti was rehabilitated in 2008 by Pa&Co International and was homologated by the International Equestrian Federation – IEF.

The works had been completed in a record time of 7 days, the project being one where project management skills have been perfectly combined with the technology and human resources used.

Project Name	Value of Contract at Completion USD	Contract Starting Date	Role in contract	Employer
Bucharest Ring - Race course construction al FIA Standards	6.500.000	May 2007	Sole Contactor	Bucharest Ring SA

Project Name	Value of Contract at Completion USD	Contract Starting Date	Role in contract	Client
Equitation Field at FEI Standards Bucharest, Romania	-	April 2007	Sole Contactor	Confidential

Maintenance works on winter time

Maintenance works on summer time



Pa&Co International developed a maintenance works program for summer time as well as for winter time.

On winter time:

- ▣ works of snow and glazed frost removal for all type of roads including motorways and airport runways
- ▣ Repairs of protection parapets
- ▣ Trail out the cars blocked in snow
- ▣ Traffic unblocking
- ▣ Cleaning the bridges and viaducts
- ▣ Transport of non-skid material
- ▣ Set up protection fences
- ▣ Cleaning works for parking and road shoulder
- ▣ Transport of materials
- ▣ Run way inspection for establish the road condition.



Maintenance works on summer time:

- ▣ Washing and cleaning of ditches, diggings and culverts
- ▣ Setting up of road signs and safety barriers
- ▣ Maintenance of green areas, parking and crossroads
- ▣ Periodical maintenance works on roads
- ▣ Periodical maintenance works on bridges, drainages, supporting walls, shore protection, river beds arrangement
- ▣ Works of road marking
- ▣ Montage of balustrade

Production bases



Pa&Co International is endowed with concrete and asphalt plants with high productivity and a minimum level of pollutant emissions. Plants are fully automated and can prepare all types of asphalt mixtures. Plants can be removed and in maximum ten days, can work on a new site.
Short description of the bases in the country:

- Tartasesti production base, county of Dambovita – asphalt mixing plant, with a capacity of 240 tones / hour

- Bacau production base – asphalt mixing plant, with a capacity of 160 tones / hour
- Onesti production base
 - Concrete plant BETOMIX production, with a capacity of 100 cubic meters / hour
 - Asphalt mixing plant, with a capacity of 90 tones / hour
 - Asphalt emulsion plant, of 15 tones / hour bituminous emulsion
- Zalau production base – asphalt mixing plant, with a capacity of 200 tones / hour.

Production bases locations

Location	Coordinates
1. Tihau	47° 14' lat. N 23° 19' long. E
2. Tg. Neamt	47° 12' lat. N 26° 22' long. E
3. Ghergheni	46° 43' lat. N 25° 36' long. E
4. Suseni	46° 40' lat. N 25° 34' long. E
5. Bacau	46° 34' lat. N 26° 55' long. E
6. Onesti	46° 15' lat. N 26° 46' long. E
7. Radeana	46° 12' lat. N 26° 56' long. E

Location	Coordinates
8. Oituz	46° 13' lat. N 26° 37' long. E
9. Ploiesti	44° 56' lat. N 26° 02' long. E
10. Gherghita	44° 48' lat. N 26° 16' long. E
11. Tartasesti	44° 34' lat. N 25° 50' long. E
12. Medgidia	44° 15' lat. N 28° 17' long. E
13. Balti	47° 60' lat. N 27° 55' long. E

THE CHAMBER OF COMMERCE AND INDUSTRY OF BACAU

Title	Year
1st place in Top of Companies 1993, county report, for outstanding economic and financial achievements, section Services, medium private enterprises (International Transport Service)	1993
2nd place in Top of Companies 1994, county report, based on the results achieved in economic and financial area, section Services, medium enterprises (International Transport Service)	1994
1st place in Top of Companies 1994, county report, based on the results achieved in economic and financial area, section Services, small enterprises	1994
3rd place in Top of Companies 1995, county report, based on the results achieved in economic and financial area, section Transport, small enterprises (International Transport Service)	1995
1st place in Top of Companies 1995, county report, based on the results achieved in economic and financial area, section Transport, small enterprises	1995
1st place in Top of Companies 1996, county report, based on the results achieved in economic and financial area, section Transport, small enterprises	1996
Top charts 1994 - 1996 Excellence Award for first place ranking in three consecutive years in the County Top of Companies editions 1994, 1995, 1996	1996
1st place in Top of Companies 1998, county report, based on the results achieved in economic and financial area, section Transport, middle sized enterprises	1998
Honorary Diploma - 3rd place in the Top of Export Companies 1998, based on the export revenues	1998
5th place in the Top of Export Companies 1999, county report, based on the export revenues	1999
Top charts 1997 - 1999 Excellence Award for first place ranking in three consecutive years in the County Top of Companies editions 1997, 1998, 1999	1999
Excellence award in 1999 for ranking among the first three places in the County's Top of Companies, in 1996, 1997, 1998	1999
1st place in Top of Companies 1999, county report, based on the results achieved in economic and financial area, section Transport, middle enterprises	1999
Honorary Diploma - 1st place in the Top of Export Companies 2005, based on results achieved in economic and financial area in 2005	2005
1st place in Top of Companies 2005, based on the results achieved in economic and financial area, section Road Construction, large enterprises	2005
Excellence Diploma for first place ranking in the County Top of Companies editions 2001, 2002, 2003, 2004, 2005	2006
1st place in County Top of Companies 2007 based on economic and financial results achieved in 2007, performant management, constant improvement of quality standards and contribution to sustainable economic development of Bacau county - section Construction - Road Construction - large enterprises	2007
1st place in County Top of Companies 2008 based on economic and financial results achieved in 2008, performant management, constant improvement of quality standards and contribution to sustainable economic development of Bacau county - section Construction - Road Construction - large enterprises	2008
County Top of Companies 2008 - Diploma for sustainable investments made in 2008 with economic impact at county level, regional and national levels	2008

COOPERATION COUNCIL OF CHAMBERS OF COMMERCE AND INDUSTRY OF ROMANIA

Title	Year
12th place in the National Top of Companies 1993 based on the results achieved in economic and financial area, section Services, medium private enterprises (International Transport Service)	1993
5th place in National Top of Companies 1994, based on economic and financial results achieved, section Services, small enterprises	1994
5th place in National Top of Companies 1994, based on economic and financial results achieved, section Services, small enterprises	1995

NATIONAL COUNCIL OF PRIVATE SMALL AND MEDIUM ENTERPRISES FROM ROMANIA

Title	Year
57th place in National Top of Private Companies and 1st place in County Top of Private Companies 1996	1996
2nd place in National Top of Private Companies 2000, section Other land transport	2000

CHAMBER OF COMMERCE AND INDUSTRY OF ROMANIA

Title	Year
6th place in National Top of Companies 1996, section Transport, middle enterprises	1996
6th place in National Top of Companies 1996, section Transport, middle enterprises	1998

CHAMBER OF COMMERCE AND INDUSTRY OF ROMANIA AND BUCHAREST MUNICIPALITY

Title	Year
2nd place in National Top of Companies, edition 2000, based on economic and financial results achieved in 1999, section Transport, middle enterprises	1999
3rd place in National Top of Companies, edition 2000, based on economic and financial results achieved in 1999, section Direct Exporters, middle enterprises	1999
10th place in National Top of Companies, edition 2001, based on economic and financial results achieved in 2000, section Transport, large enterprises	2000
4th place in National Top of Companies, edition 2002, based on economic and financial results for 2001, section Transport, middle enterprises	2001

ROMANIAN GOVERNMENT - Ministry for Small, Medium and Cooperative Enterprises

Title	Year
Brevet - First Place in Top Section of Small and Medium-financial economic performance, in transport, medium-sized enterprises	2002

International Trade Publication ACTUALIDAD - MADRID

Title	Year
International Grand Prix for services of best quality, edition 1996	1996
International Grand Prix for services of best quality, edition 1997	1997
International Grand Prix for services of best quality, edition 1998	1998

Social responsibility



Pa&Co International has developed its activity in an economic environment dominated by the multitude of social problems caused by the transition. We considered fair that part of our efforts to be found in the communities where our work takes place. People's lives, their problems, weren't indifferent to us, and our charity actions have concerned both people's fate and community welfare as a whole.

ENVIRONMENT PROTECTION

Keeping the balance of nature, reducing industrial assault on the environment is the constant concern of Pa&Co International company. We were always aware that our areas of activity – wood processing, construction and transport – could represent an attack on air, soil or water with harmful effects on human health and comfort.

Respect for the environment is, however, essential to how we thought and realized the company's development. Our investments have involved significant sums in order that Pa&Co International's activities do not affect natural balance.

Pa&Co International, together with specialists from Bacau Forestry Directorate, has engaged in combating trees aging, has financed and carried out works to open inaccessible areas, which had the effect of refreshing and restoring forests. Special attention was given to reforestation campaigns, started early in our work.

CULTURE AND EDUCATION

Pa&Co International supports educational and cultural projects convinced that these two areas are of utmost importance for the future of Romanian society. We support projects, especially when those projects were aimed to increase quality of education and better conditions of study for students.

Pa&Co International has sponsored in recent years:

- "Sfanta Maria" Institute from Bucharest
- "Sfanta Maria" Institute's school and kindergarten from Braila
- "Petru Poni" High school from Onesti
- Schools from Oituz
- Finalizing "Radu Rosetti" Library from Onesti
- Construction of "Sfantul Gheorghe si Eroii Neamului" Military Parish from Bacau.

SOCIAL

Our reaction and prompt acts towards the effects of natural disasters from 2005 and 2006 showed that Pa&Co International does not remain insensitive to people who are in extreme situations. In the summer of 2005 when thousands of people from Moldova have remained isolated because of flooding, the company restored the circulation over a hundred kilometers of roads, county and municipal, following requests by local authorities. Pa&Co International employees and equipment intervened to restore the communication in dozens of isolated settlements.

Following the floods in summer 2010, over 5,000 square meters of triple-layered parquet brand Pa&Co were donated to residents of Dorohoi, Botosani, who had their homes destroyed.

About 200 children from Bacau that came from affected families benefited of a camp sponsored by our company in the summer of that year.





Pa&Co International S.R.L.

Head office Address: 557 Principala St., Bacau County
Phone: +40 234 337 700; +40 722 571 800
Fax: +40 234 337 705
Email: office@pacointernational.com

Address: 1 No Pictor Constantin Stahi St., Bucharest
Phone: +40 21 3177717
Fax: +40 21 3177718
Email: office-bucuresti@pacointernational.com

www.pacointernational.com